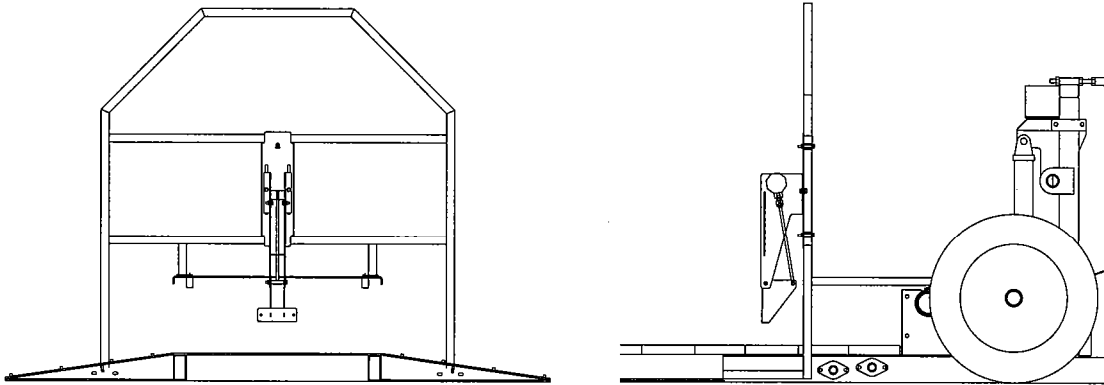


# INSTALLATION INSTRUCTIONS

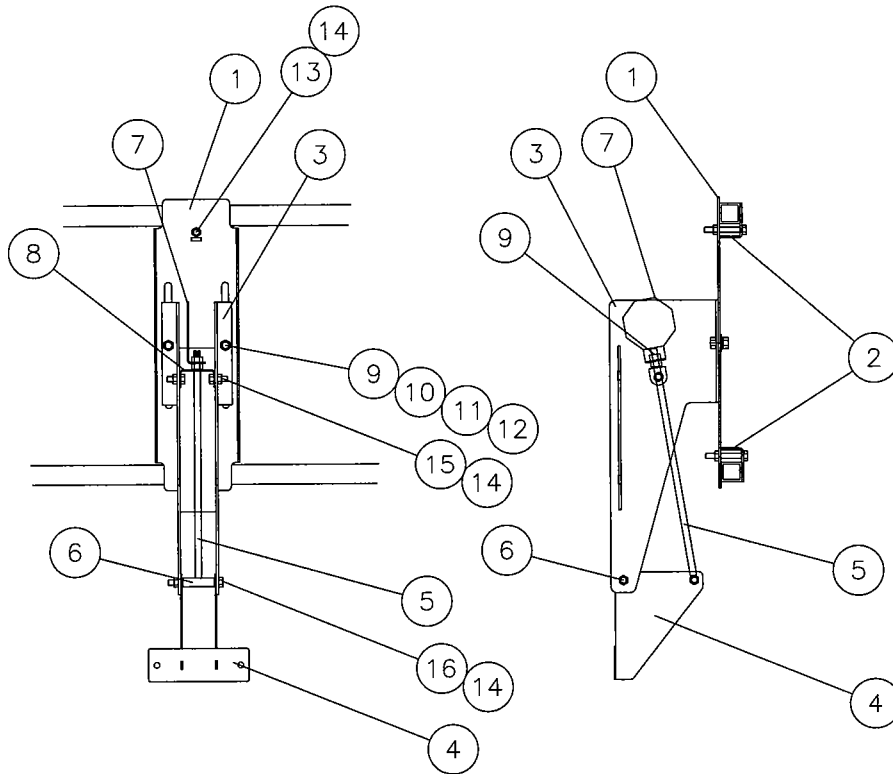
## EXCESS CAPACITY INDICATOR FOR DRIVE-OVER BELT CONVEYOR

### ASSEMBLY



1. Fasten the mounting channel (Item 1) to the center of the two 1-1/4" square handrail tubes using the mounting angle clips (Item 2) and 5/16" x 2 1/4" long bolts and locknuts (Items 13 & 14).
2. Fasten the capacity indicator support weldment (Item 3) to the mounting channel (Item 1) using two 3/8" x 1" bolts, lockwashers, flatwashers and non-lock nuts (Items 9, 10, 11 & 12). Fasten near center of slots in mounting channel for now. Height adjustment will be made later.
3. Connect the swing bracket weldment (Item 4) to the indicator support weldment (Item 3) using a 5/16" x 3" bolt and locknut (Items 14 & 16). NOTE: A spacer pipe (Item 6) should be sandwiched between the two sides of the swing bracket.
4. Fasten the pivot bracket (Item 8) between the sides of the indicator support weldment (Item 3) using two 5/16" x 3/4" bolts and locknuts (Items 14 & 15). Leave pivot bracket loose enough so it is free to pivot.
5. Slide the threaded end of the push rod (Item 5) up through the holes in the pivot bracket (Item 8).
6. Fasten the other end of the push rod (Item 5) to the swing bracket (Item 4) using a 5/16" x 3" bolt and locknut (Items 14 & 16).
7. Thread a 3/8" nut (Item 9) onto the end of the push rod (Item 5).
8. Install the signal panel (Item 7) onto the threaded end of the push rod and install another 3/8" nut to secure it in place.

# PARTS LIST



<b>Ref. No.</b>	<b>Part No.</b>	<b>Description</b>
1	1028088	Mounting Channel
2	1028089	Mounting Angle Clip
3	1028093	Capacity Indicator Support Weldment
4	1028096	Swing Bracket Weldment
5	1028109	Push Rod Weldment
6	1028107	Spacer Pipe
7	1028100	Signal Panel
8	1028099	Pivot Bracket
9	D1149	Nut, 3/8" Non-lock
10	33060	Bolt, HHCS 3/8" x 1"
11	33024	Washer, 3/8" Flat
12	D1150	Washer, 3/8" Lock
13	33261	Bolt, HHCS 5/16" x 2-1/4"
14	33135	Nut, 5/16" Lock
15	4707-1	Bolt, HHCS 5/16" x 3/4"
16	33313	Bolt, HHCS 5/16" x 3"

**IMPORTANT NOTE:**

As material on the conveyor belt contacts the bottom of the swing bracket (Item 4), it will begin to pivot around and raise the signal panel up out of the support weldment (Item 3). The capacity of the equipment being fed by the drive-over conveyor will determine the distance you want the swing bracket positioned above the conveyor belt. If you find that the equipment being fed is becoming overloaded, lower the indicator support (Item 3) on the mounting channel (Item 1).

It is up to the operator who is controlling the feed onto the drive-over conveyor to monitor the position of the signal panel (Item 7) and regulate the feed rate accordingly. This indicator is merely a visual indicator of relative feed rates.