

Hutchinson I Mayrath

ASSEMBLY INSTRUCTIONS

The following instructions are to be used for assistance with the set-up and installation of equipment, accessories, and serviceable parts used on this machinery and are not meant to replace any operating or safety procedures as outlined in the Operator's Manual included with the auger.



This safety symbol is used throughout these instructions to alert you to information about unsafe actions or situations, and will be followed by the word **DANGER**, **WARNING**, or **CAUTION**. Be Alert! Your safety and the safety of others is involved.

DANGER - Indicates immediate hazards that may result in severe injury or death. **WARNING** - Indicates unsafe actions or situations that may cause severe injury, death and/or major equipment or property damage. **CAUTION** - Indicates unsafe actions or situations that may cause injury, and/or minor equipment or property damage.

SWIVEL ARC AXLE KIT, PART NO. P3075A8

for use with

Four and Five Bolt Hub Mounting



WARNING! When installed, this kit will increase the transport height of the conveyor. Be aware of power lines and other obstacles that may cause hazardous conditions when transporting the conveyor.

Whenever reference is made to the front, rear, left and right side of the conveyor it is always determined by standing at the inlet end and looking towards the discharge end.

The wheel pivot axles and hub are preassembled at the factory. Refer to Page 4 for parts breakdown of the hub assembly if replacement parts should ever be needed.

Before beginning assembly it is suggested to read through these instructions and lay out all items from the kit to ensure all parts are accounted for. This not only helps you become familiar with the parts and assembly procedures, but also makes you aware of what tools, equipment or materials you may need to complete the installation process.

1. With the conveyor in its lowered position, raise one side of the conveyor axle just high enough to allow the tire to clear the ground. Use jack stands or equivalent to support the conveyor axle and remove the tire and wheel assembly.
2. Mount the swivel axle weldment to the conveyor axle hub as shown in Fig. 1 below. Secure the swivel axle to the conveyor hub using four (or five) 1/2-20 x 1" lug bolts.

NOTE: There is a right and left hand side swivel axle weldment. The right hand side is shown in Fig. 1. The outside mounting tab on the right side swivel axle will be positioned towards the discharge end of the conveyor.



CAUTION! When raising the conveyor axle, Do Not rely solely on mechanical jacks, hydraulic jacks, or overhead hoist's for support. Use appropriate jack stands or equivalent for supporting the unit.



Some items in this kit are heavy, to prevent personal injury, use assistance during the installation and assembly process.

Assembly Procedures

When removing the tire and wheel assemblies from the conveyor, raise only one side of the conveyor at a time.

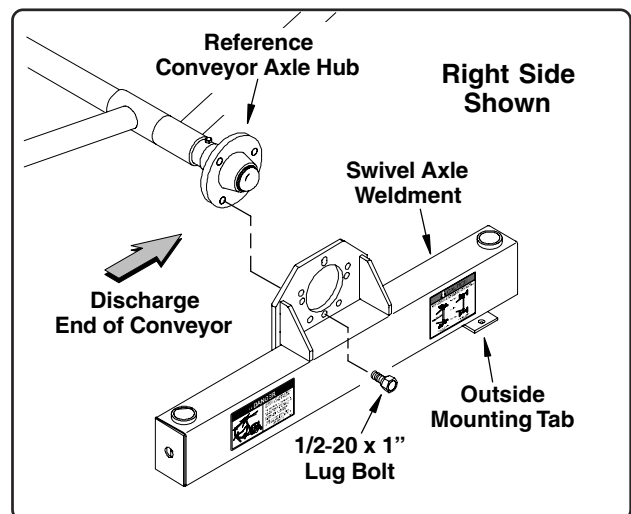


Fig. 1

Assembly Procedures (con't.)

3. With the swivel axle mounted to the conveyor axle hub, install the wheel pivot axle and hub assemblies. Insert the pivot wheel shaft into the swivel axle tube as shown in Fig. 2. Secure the pivot assemblies using one 1/2" x 1 1/2" bolt, flat washer, lock washer and non-lock nut (the flat washer will go against the slotted hole. The round hole is used for transport, the slotted hole is used only when swinging the conveyor in an arc. Fig. 2 shows the pivot assemblies being secured to the slotted hole).
4. After the wheel pivot axles have been installed, lubricate the pivot shafts using a good quality lithium based grease. The grease zerks (lubrication fittings) are accessible through the opening at each end of the swivel axle (See Fig. 2).
5. Mount the wheel and tire to the hubs on the wheel pivot axle and secure using the lug bolts provided. **NOTE: The tires are furnished with the kit. Inflate to manufacturers recommendation listed on the tire.**
6. After the tires have been mounted, lower the conveyor and repeat these procedures on the opposite side of the conveyor.

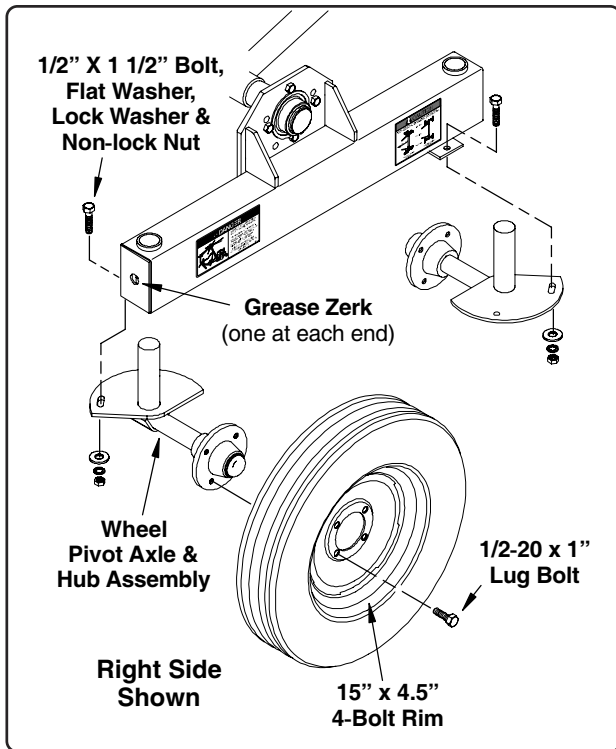


Fig. 2

Transporting the Conveyor and Swinging Conveyor in an Arc

Refer to the illustration on Page 3 for positioning wheels in the transport and swinging arc positions.

Be sure the 1/2" x 1 1/2" bolts that are securing the pivot assemblies are tight when transporting.

Use holes marked "A" for transport position.

For swinging the conveyor in an arc, the slotted holes marked "B" should be used. Be sure to align the wheels properly to prevent skidding when moving the conveyor in an arc (See illustration on following page).

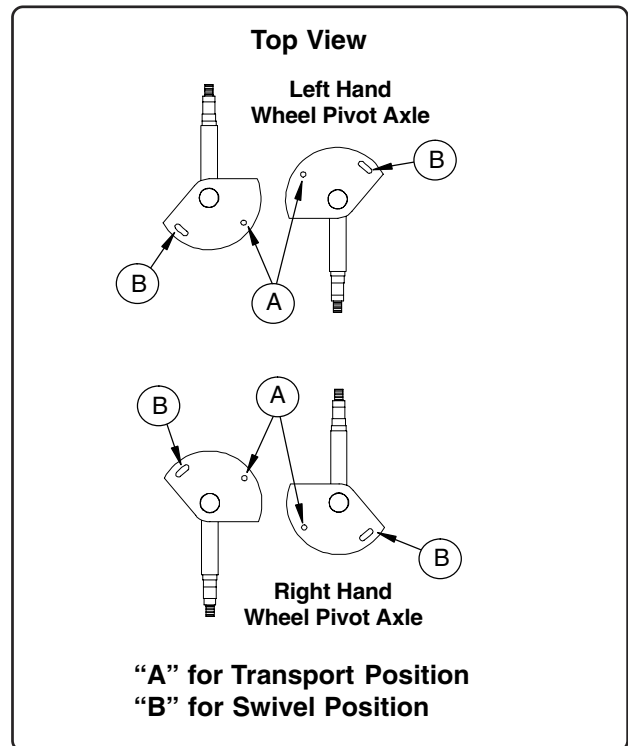


Fig. 3

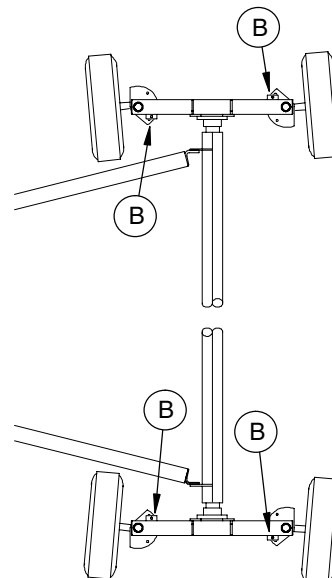
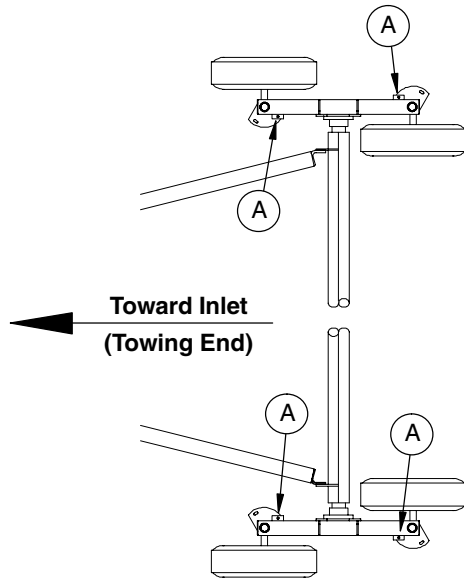
Transporting the Conveyor
and Swinging Conveyor in an Arc (con't.)



CAUTION! The wheels must be in the transport position when raising or lowering the conveyor if the inlet end is held in position. Damage to the conveyor housing will occur if the wheels are in the swivel arc position.

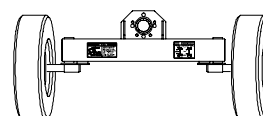
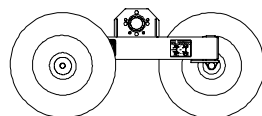
Use Holes Marked "A"
for Transport Position

Use Holes Marked "B"
for Swivel Position



Top View
Transport Position

Top View
Swivel Position



Side View
Transport Position

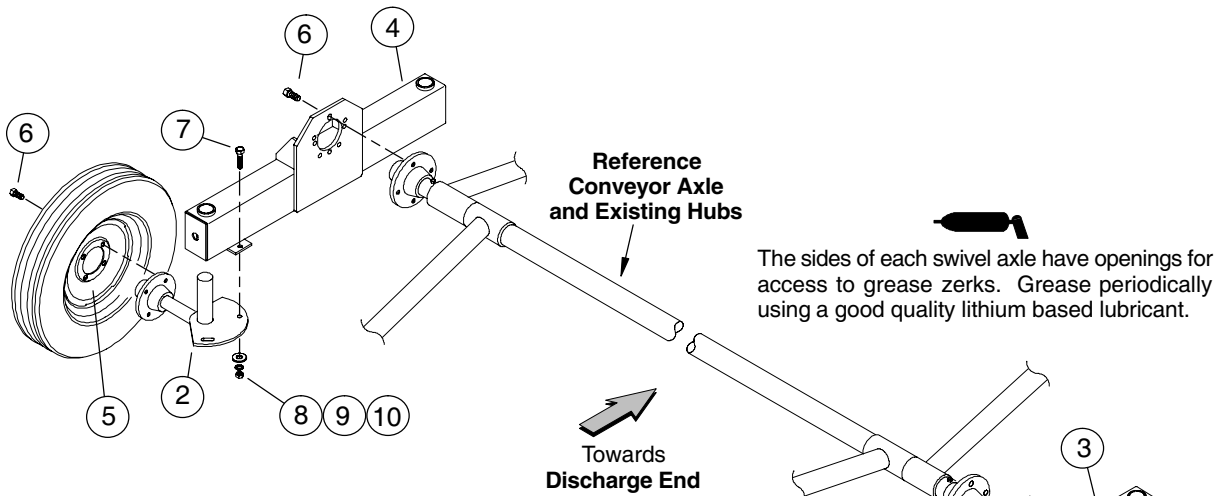
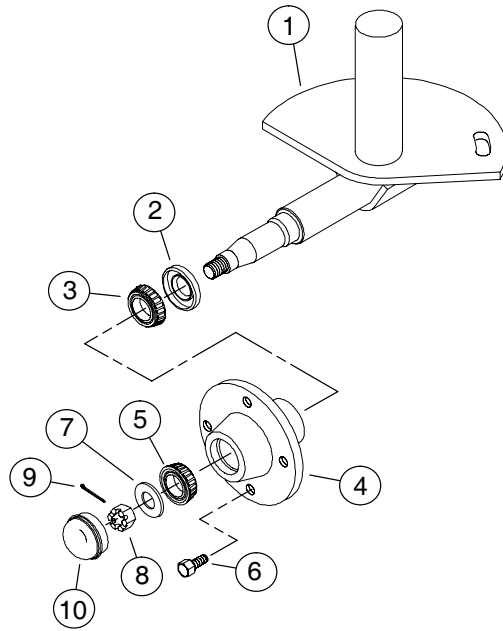
Side View
Swivel Position

An electric drive tractor kit is available for installation and use with the swivel arc kit. The tractor attaches directly to the swivel axle and is used to power the movement of the conveyor. To obtain the **Electric Drive Tractor Kit** order Part No. A2031B1 (230v 1 phase), or A2031B2 (230v 3 phase).

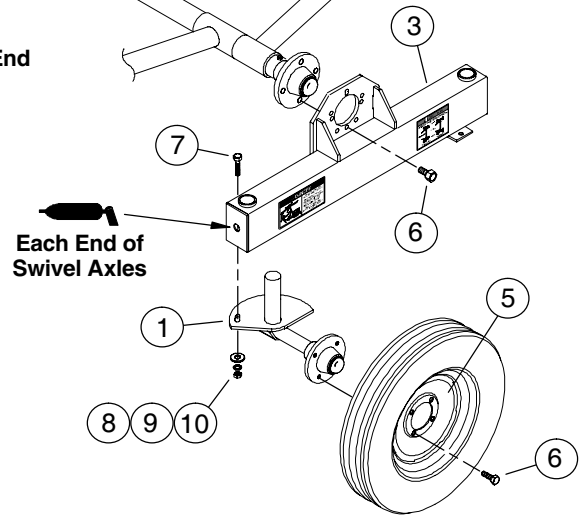
PARTS LIST

SWIVEL ARC KIT, PART NO. P3075A8

Ref. No.	Part No.	Description
1	1028391	Swivel Wheel/ Hub Ay. (RH)
(1)	1028392	Swivel Wheel/ Hub Ay. (LH)
2	106245	Grease Seal
3	3079R1	Bearing, Cone (inner)
4	90174	Hub Assembly, 4-bolt (includes bearing cups)
5	40551	Bearing, Cone (outer)
6	106241	Lug Bolt, 1/2-20 x 1"
7	106252	Washer, 1 5/16" O.D. x 21/32" I.D.
8	106250	Nut, Castle, 5/8-18 UNF
9	D1146	Cotter Pin, 5/32" x 1 1/4"
10	106244	Dust Cover



Ref. No.	Part No.	Description
1	1028391	Swivel Wheel/ Hub Ay. (RH)
2	1028392	Swivel Wheel/ Hub Ay. (LH)
3	1037265	Swivel Axle (RH)
4	1037266	Swivel Axle (LH)
5	1029082	Tire & Rim Ay. 4 Bolt, 8 Ply
6	106241	Lug Bolt, 1/2-20 x 1"
7	1002227	Bolt, 1/2-13 x 1 1/2"
8	33025	Washer, 1/2" flat
9	D1143	Washer, 1/2" lock
10	D1169	Nut, 1/2-13 non-lock



HUTCHINSON MAYRATH

MANUFACTURED BY
HUTCHINSON | MAYRATH

P.O. Box 629, 514 W. Crawford Street **TF** 800.523.6993
Clay Center, Kansas **P** 785.632.2161
USA 67432 **F** 785.632.5964

hutchinson-mayrath.com